



MODEL T-3002 ACCESSORIES

We have a number of accessories that compliment our 3002 series of towers.

600030 *2 Conductor Wire*

This is a one pair shielded direct burial cable that is suitable to connect the DRC3 to the computer control in you radio building. The wire is 20 AWG solid copper. This wire has been specially selected for operation with this system for its compatibility and durability. It is manufactured by a major USA wire manufacturer.

923509 *FCC350A-9000A*

This is a 1 5/8" EIA Lightning protector for your coax line. It's power ratings sized to meet the power handling capabilities of the LP1000 series of antennas. Each unit is tested and certified.

929000 *F9000*

This is a replacement tube for the 9000A Lightning Suppressor.

920226 *1-5/8" EIA Mitre Elbow*

Used at the bottom of the tower to get the coax going in the right direction.



920238 *1-5/8" EIA Gas Block*

Used at the bottom of the tower to pressurize the rigid transmission line and feedline.

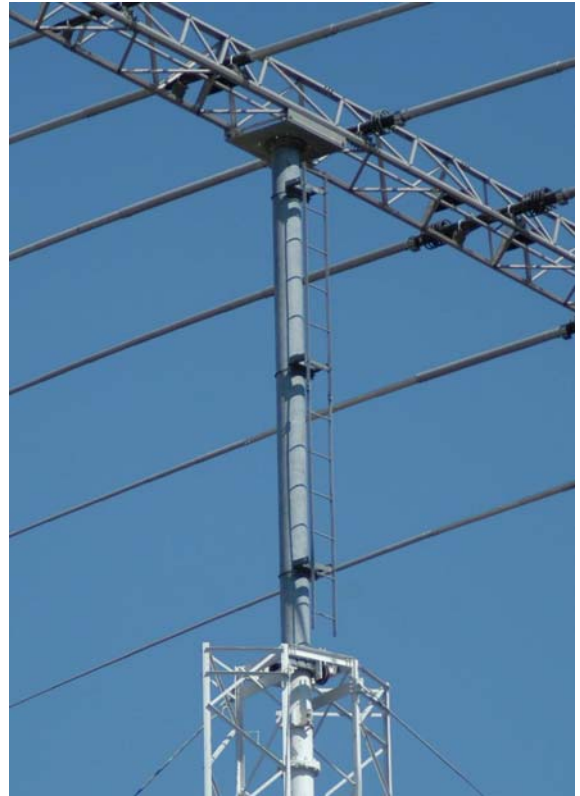
940028 *80 Foot Safety Climb*

80 foot of safety cable and all brackets to install system to tower. Includes Slider



940025 Climbing Ladder Kit

This is a 16 foot ladder kit to bolt to the rotating mast section of the tower past the last tower section. It provides climbers safer access to the antenna when performing maintenance.



3715AA Tower Obstruction Lighting Kit

Dual Lighting kit with conduit, wire and all mounting brackets to mount system to tower.



United States Antenna Products (USAP) manufactures at our Frederick, Maryland plant. We can install, tune and provide a regular maintenance program for your antenna site operations.

United States Tower Services (USTS) has over thirty years experience in erecting and servicing antennas and antenna tower systems. This includes extensive experience in the installation and maintenance of large HF stationary and rotating arrays.

Combined, USAP and USTS will provide a total antenna system, up and running – just connect your radios to the transmission lines we have installed.